

FIXTURE TYPE: \_\_\_\_\_  
 PROJECT NAME: \_\_\_\_\_

## BRONZELITE JB6 SUBMERSIBLE JUNCTION BOX SPECIFICATION SHEET



**LID:** Marine grade cast bronze.

**FASTENERS:** Stainless Steel.

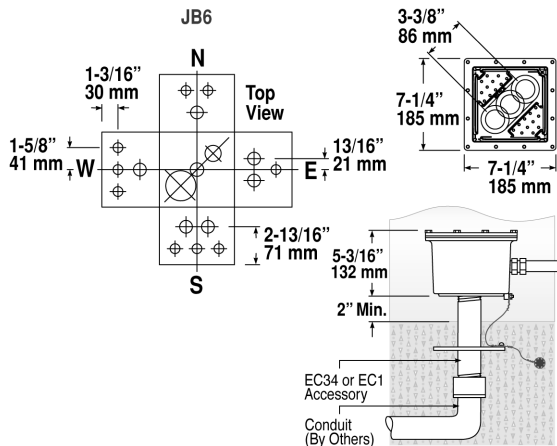
**GASKET:** Single-piece, high temperature silicone.

**HOUSING:** Marine grade cast bronze. Junction box has a volume of 125.7 cubic inches and is furnished with internal grounding lugs per the NEC. Use with up to 12 luminaires.  
 Maximum bottom taps (N.P.T.) = (2) 1/2", 3/4", 1", 1-1/4", 1-1/2" or 2"

Maximum side taps (N.P.T.) = (20) 1/2", five each side (16) 3/4", four each side.

**CERTIFICATION:** UL Listed to U.S. and Canadian safety standards for submerged use with fountain luminaires.

### DRAWINGS/TEMPLATES



### ORDERING INFORMATION

When ordering, specify size NPT of bottom hub(s) and size (NPT) and placement of side taps. Cord compression seals must be ordered separately.

Total Forms Per Order:		# of #					
Total Duplicate Junction Boxes per this Order Form	Side Taps 20 Total 1/2" 16 Total 3/4"	North Qty. 5 Total	East Qty. 5 Total	South Qty. 5 Total	West Qty. 5 Total	Bottom Qty. 2 Total	Bottom Taps Max. 2 Total
	1/2" NPT (5 Max.)						1/2" NPT
	3/4" NPT (4 Max.)						3/4" NPT
							1" NPT
							1-1/4" NPT
							1-1/2" NPT
							2" NPT

**FORM INSTRUCTIONS:**  
 Specify Total # of forms per order at top of order matrix (i.e. 1 of 1)  
 Specify Total qty. of duplicate Junction Boxes above.  
 Specify qty. per side in appropriate blank to right of SIDE TAPS.  
 Specify qty. per bottom in appropriate blank to left of BOTTOM TAPS.  
**One drilling configuration per request form.**

### ACCESSORIES

**CC50:** Machined Naval brass cord seal with neoprene packing seal and brass friction ring. 1/2" N.P.T. for use with 16-3 STO-WA entry into junction box.

**CC75:** Machined Naval brass cord seal with neoprene packing seal and brass friction ring. 3/4" N.P.T. for use with 10-3 STOWA entry into junction box.

**CC50F:** Machined Naval brass cord seal-neoprene packing seal, brass friction ring. 1/2" NPT x 16-3 cord.

**CC75F:** Strain relief, machined naval brass cord seal-neoprene packing seal, brass friction ring. 3/4" NPT x 10-3 cord.

**EC34:** Stainless steel waterproofing penetration fitting. 3/4" N.P.T. x 8" long for use with supply conduit into junction box.

**EC1:** Stainless steel waterproofing penetration fitting. 1" N.P.T. x 8" long for use with supply conduit into junction box.

**PC4JB6:** Re-enterable encapsulant for sealing junction boxes, 125.7 cubic inches. For use with the JB6.

### PROJECT NOTES

---



---



---



---



---



---



---

### APPROVAL