

FIXTURE TYPE: _____
 PROJECT NAME: _____

BRONZELITE TL4012 LED ACCENT FIXTURE SPECIFICATION SHEET



TL Series accents are compact, rugged luminaires perfect for highlighting a wide variety of landscape and architectural elements. Available in many sizes, TL accents offer choices in sources, power distribution systems and accessories. Available sources include LED, MR16, PAR/R incandescents, CFL and HID. Sleek lines with heavy-duty construction ensure beautification and enduring, low maintenance operation.

UL Listed for **both outdoor and indoor use, cUL outdoor only**. Cool external temperatures - **all below 46°C!** - so the luminaire is **cool to the touch, including the lens**. Perfect for high pedestrian traffic and plant life applications. Exceeds European Standard EN 563 for both 1 second (74°C for coated metal, 80°C for glass) and 4 seconds (61°C for coated metal, 70°C for glass) of contact.

model TL4012 LED

SPECIFICATIONS

HOUSING: Die cast aluminum (copper free) with stainless steel fasteners and fully adjustable swivel arm with vibration-proof locking teeth. Shield provided for glare control.

LENS: Clear tempered glass, part of glare shield or warm white lens 3000K. Lens affixed at an angle to promote natural cleaning.

LEDs: Type III Luxeon® white high brightness (HB) LEDs. Deliver 70% lumen maintenance at 50,000 hours. Cool white (5500K nominal). With warm lens (3000K nominal).

ELECTRICAL: 12.4 total watts. Input voltage range of 10.8-17.5 VAC/60Hz. Supply requires remote magnetic 60Hz transformer.

Powered by Advance™: Integral Advance™ electronic LED driver with integral surge protector. UL Class 2. -40°C/F minimum starting temperature. 12VAC/60Hz luminaire, requires remote magnetic transformer.

OPTICS: Integral spot (12°) or narrow flood (25°) optics available.

GASKETS: High temperature silicone.

WIRING: Prewired with a 3' pigtail and a quick connector for easy hook-up to the supply cable.

FINISH: Color thermoset polyester powdercoat. Standard finishes include Dark Bronze (DB) and Black (BLK).

WARRANTY: 3 year limited warranty.

CERTIFICATION: UL Listed to U.S. safety standards for wet locations (outdoors) and for indoors. cUL Listed to Canadian safety standards for wet locations (outdoors).

IP66: Dust-tight and sealed against direct jets of water.

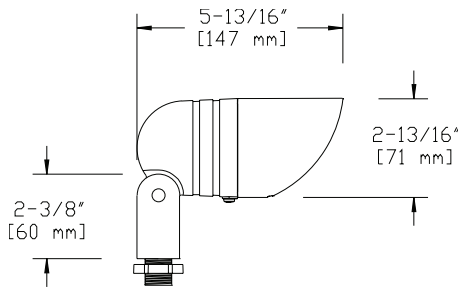
ELECTRICAL

Luminaire	CCT, nom.	Input Voltage Range	Input Draw, max.	Power Consumption	Luminaire Efficacy*	Total Lumens*	Starting Temp., min.
TL4012DLVSS_C	5500K	10.8-17.5VAC	1.7A	12.4W	15.9LPW	197	-40°C/F
TL4012DLVSF_C	5500K	10.8-17.5VAC	1.7A	12.4W	15.5LPW	192	-40°C/F
TL4012DLVSS_W	3000K	10.8-17.5VAC	1.7A	12.4W	10.8LPW	134	-40°C/F
TL4012DLVSF_W	3000K	10.8-17.5VAC	1.7A	12.4W	10.5LPW	130	-40°C/F

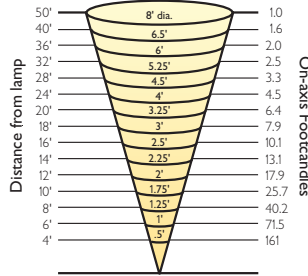
*Efficacy and Total Lumens include losses due to driver, collimating optics and/or lens/diffuser.

FIXTURE TYPE: _____
 PROJECT NAME: _____

DIMENSIONS



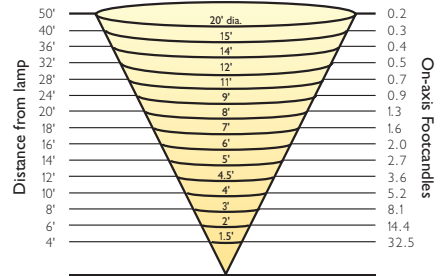
TL4012DLVSS Spot (12°)



Shape of cone is not to scale

Cool White

TL4012DLVSF Narrow Flood (25°)



Shape of cone is not to scale

Cool White

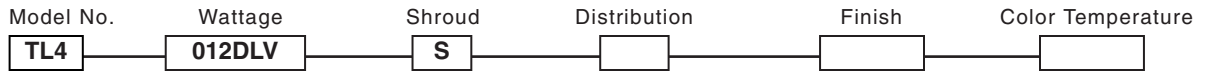
ORDERING LOGIC - TL4012 LED

S=Spot
F=Flood (narrow)
BLK=Black
DB=Dark Bronze
C =Cool White (5500K)
W =Warm White (3000K)

Lamp	Model No.	Wattage	Shroud	Distribution	Finishes	Color Temperature
LED	TL4	012DLV	S	()	()	()

Note: LED's included.

Note: Requires remote magnetic (60Hz) transformer.



PROJECT NOTES

Bronzelite® Sure to endure®

APPROVAL

Note: Bronzelite reserves the right to modify the above details to reflect changes in the cost of materials &/or production &/or design without prior notice.

BRONZELITE - GENLYTE GROUP LLC • 100 Craftway • Littlestown, PA 17340 • Ph. (800) 273-1569 • Fax (717) 359-9545 • www.bronzelite.com

ISO 9001:2000 Registered

Copyright Genlyte Group LLC, BRONZELITE Division 2008

TL4012LED-Rev5